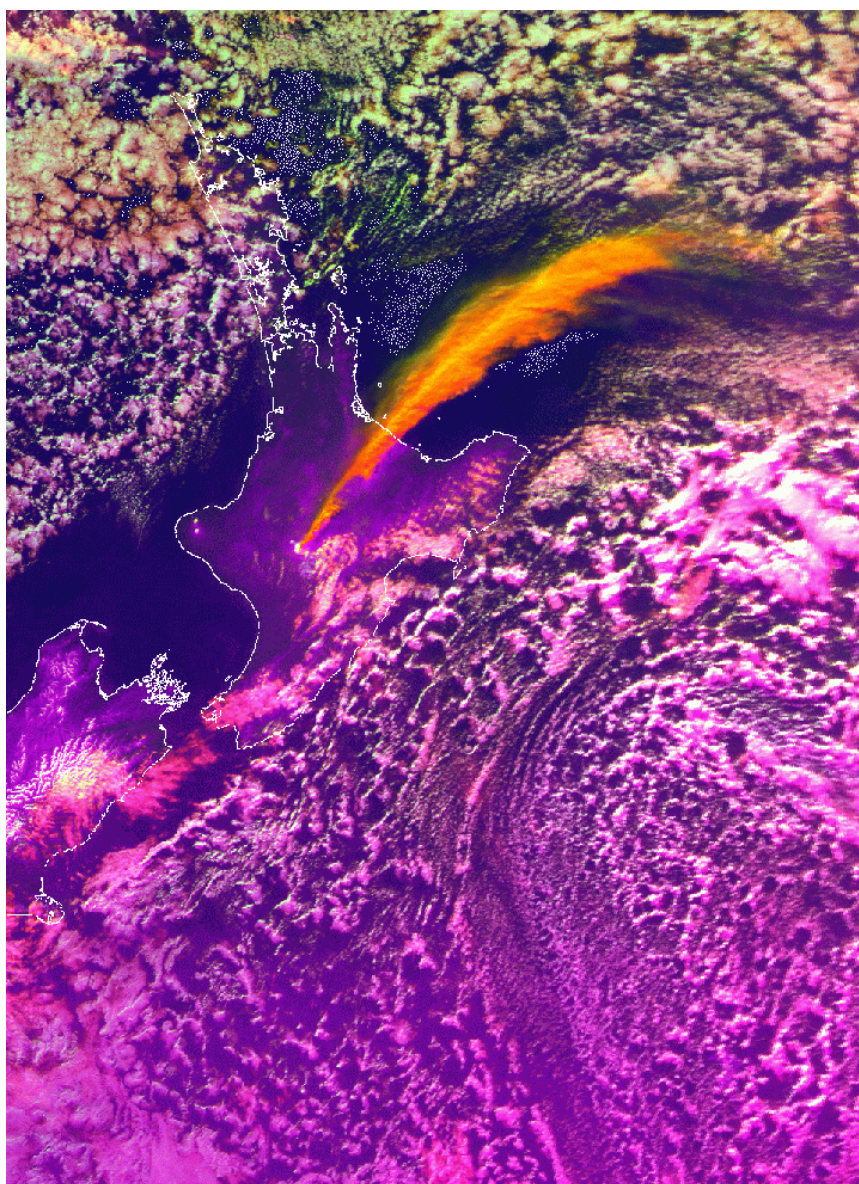


IT-27734

CIVIL DEFENCE **PLAN**

OCTOBER 2005



**ROTORUA DISTRICT COUNCIL
CIVIL DEFENCE EMERGENCY MANAGEMENT**

AIM OF PLAN

To provide for: Effective Civil Defence & Emergency Management measures in the Rotorua District

AUTHORISATION

This plan has been prepared and issued by the Rotorua District Council in pursuance of Section 64 of the Civil Defence Emergency Management Act 2002 (hereafter referred to as 'the Act')



..... **Mayor, Rotorua District Council**
(Kevin Winters)

Date: 1 November 2005

AMENDMENT LIST

NOTE: When replacement pages are used the amendment number will be shown on the bottom, right of each page.

AMENDMENT NUMBER	AMENDMENT DATE	ENTERED BY	DATE OF ENTRY
1			
2			
3			
4			
5			
6			
7			
8			
9			
10			
11			
12			
13			
14			
15			
16			
17			
18			
19			
20			

<u>CONTENTS</u>		<u>PAGE</u>
1.0	INTRODUCTION	5
1.1	Authority	5
1.2	Purpose of the Plan	5
1.3	Objectives of the Plan	5
1.4	CDEM Group Plan – Relationship	5
	Fig 1.4.1	6
2.0	STRATEGIC ISSUES	7
2.1	Rotorua District	7
	Fig 2.1.1 (Map)	8
2.2	Lifelines of Rotorua District <i>(Refer Rotorua Engineering Lifelines Project Stage II – June 2003)</i>	9
2.3	Strategic Direction	9
2.4	Hazard Profile	9
3.0	OPERATIONAL ARRANGEMENTS	9
3.1	Readiness	9
3.2	Response	11
4.0	EXERCISE OF POWER	15
4.1	Control Group	15
4.2	Local Controller	15
5.0	LOCAL EMERGENCY OPERATIONS CENTRE (EOC)	15
5.1	Introduction	15
5.2	Local EOC function	16
5.3	Local EOC Structure	16
	Fig 5.3.1	16
5.4	Local EOC human resources	16
5.5	Local EOC physical resources	17
5.6	Local EOC activation	17
6.0	TRANSITION TO LEVEL 4 EVENTS	17
6.1	Bay of Plenty CDEM Group Transition Procedures	17
7.0	RECOVERY	18
7.1	Introduction	18
7.2	Function	18
7.3	Priorities of Recovery Assistance	19
7.4	Expenditure Management	19
7.5	Finance Relief Fund	19
8.0	ADMINISTRATIVE ARRANGEMENTS	19
8.1	Rotorua District Council CDEM Activities	19
8.2	Bay of Plenty CDEM Group Representation	19
8.3	Bay of Plenty CEG Representation	19
8.4	Financial Arrangements	19
8.5	Insurance Cover	20
9.0	STANDARD OPERATING PROCEDURES AND SUPPORTING PLANS	20
9.1	Standard Operating Procedures under review	20
9.2	Emergency Plans under review	20
	ANNEX A - Persons authorised to declare a local civil defence emergency	21
	ANNEX B - Declaration of a State of Local Emergency Form	22
	ANNEX C – Extension of a State of Local Emergency Form	23
	ANNEX D – Termination of a State of Local Emergency Form	24
	ANNEX E – Persons authorised as Local Controllers for RDC	25

1.0 INTRODUCTION

1.1 Authority

The authority for this Plan resides in Section 64 (1) of the Civil Defence Emergency Management Act 2002. Its preparation and maintenance is also a requirement of the Bay of Plenty Civil Defence Emergency Management Group Plan 2005.

This Plan becomes operative at the time that the Group Plan is approved, and is subject to the same terms of review and renewal.

1.2 Purpose of the Plan

The purpose of this Plan is to:

- Identify persons authorised to declare states of civil defence emergency within and over the Rotorua Operating Area
- Identify persons authorised to act as Local Controllers within the Rotorua Operating Area and to carry out such functions and duties as may be delegated by the Civil Defence Emergency Management Group, including, but not limited to, the powers contained in Sections 86 to 94 of the Civil Defence Emergency Management Act 2002
- Give effect to operational requirements set out in the Bay of Plenty Civil Defence Emergency Management Group Plan for the Rotorua District and Group area.
- Detail the operational arrangements made by Rotorua District Council in respect of civil defence emergency management within the Rotorua Operating Area.

1.3 Objective of the Plan

The Plan has the following objectives:

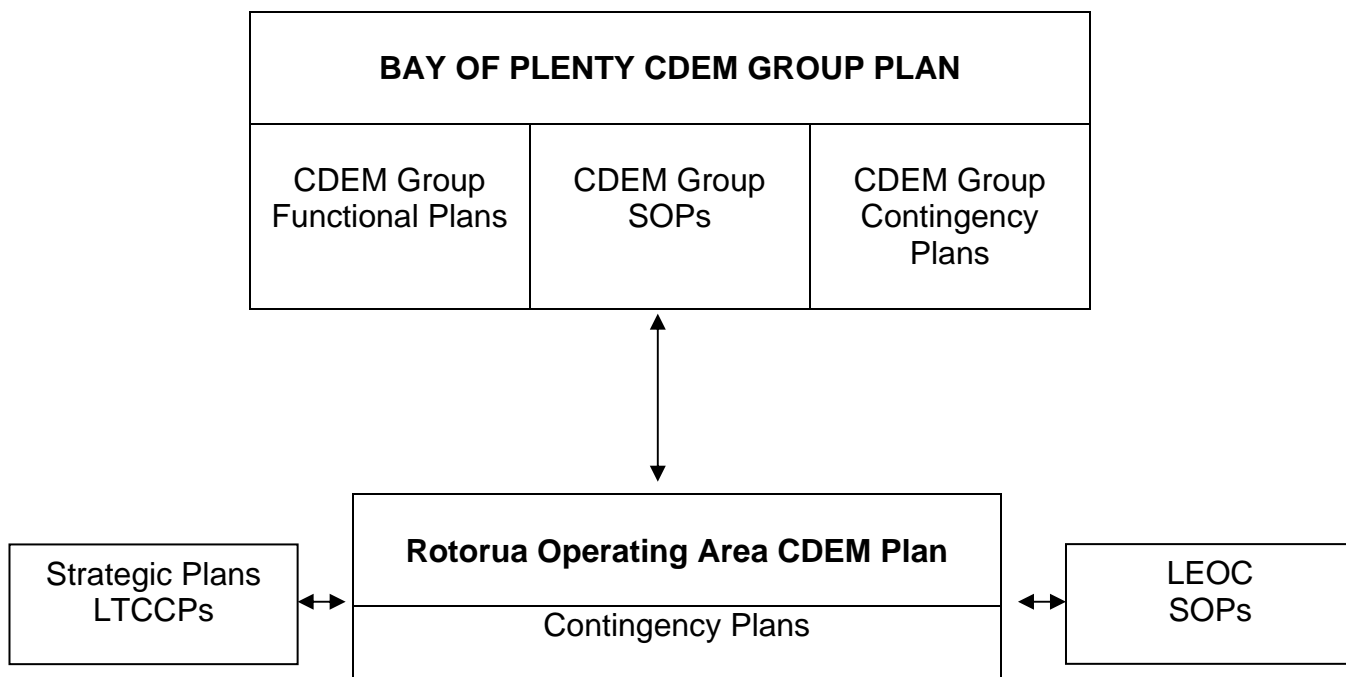
- To provide for the safety of life and property in the imminence of, during, and in the aftermath of, any event which necessitates the implementation of civil defence emergency management measures within the Rotorua Operating Area.
- To outline the structure and organisation set in place to address emergency response and recovery matters within the Rotorua Operating Area.
- To outline the emergency powers available to the appointed Local Controller(s)
- To be the vehicle through which inter-agency liaison and co-operation in local civil defence emergency management is addressed within the Rotorua operating Area.

1.4 CDEM Group Plan – Relationship

This CDEM Local Plan is consistent with the CDEM Group Plan and meets the requirements of the CDEM Group. It does not repeat details contained in the Bay of Plenty CDEM Group Plan except where necessary for the purposes of clarification. It should therefore be read in

conjunction with the CDEM Group Plan and Rotorua District's SOPs, Supporting and Strategic Plans. (Refer Fig 1.4.1)

Fig 1.4.1 – Relationship of this Plan with the Bay of Plenty CDEM Group Plan



2.0 STRATEGIC ISSUES

2.1 Rotorua District

The Rotorua District has a total area of some 2708 square kilometres and a population of just under 68000 (refer Census 2001). Of this total, the great majority reside in Rotorua City with a population of almost 57000. The rest of the district's inhabitants are in the smaller townships of Mamaku, Reporoa, Kaingaroa, around the lakes and in the rural area. According to Census 2001 data, Rotorua has a younger than average population, and a Maori population which nears 30 percent. The three main areas of employment in Rotorua District are: -

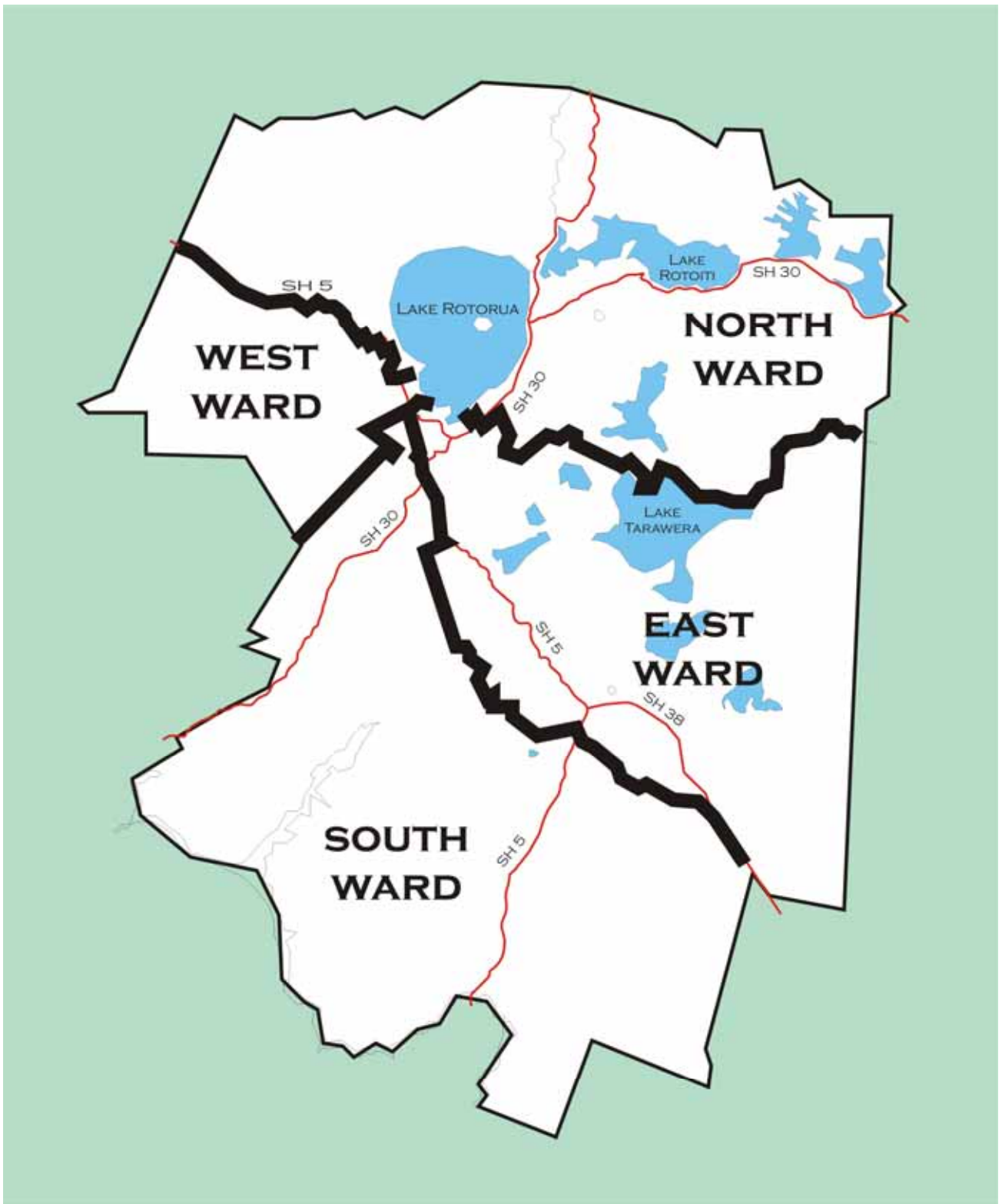
1. Farming
2. Forestry
3. Tourism

In almost all respects, Rotorua's central location is most significant. Four state highways (5, 30, 33 and 38) converge on the City. The district is served by Rotorua Airport, one of the busiest in the country. The City is an important agricultural and forestry service centre for the surrounding rural district. The fact that from almost any position in the city it is possible to see pasture or forest clad hills, illustrates the importance of this rural/urban relationship. The City is also a major centre of public administration, and contains many regional offices of government departments, as well as extensive health care facilities.

The Maori people were the first inhabitants of the district. Although predominantly from the Arawa tribe, other iwi (tribes) are now represented in the district. The earliest Maori villages in the area, around which modern urban Rotorua is based, were situated within close proximity to geothermal sites, including Ohinemutu and Whakarewarewa. Although the Maori community is now predominantly urban, there are around 35 marae (sub-tribal communal centres) in the district, at least 20 of which are situated in rural areas. The Maori community and its culture and traditions have a very significant influence in the district.

The Emergency Services comprising Police, Fire and Ambulance administer most of this district's activities from Rotorua. However, the '111' system for emergency control has been moved to central call-centres, although a capability still remains for local control to be re-instated in times of an emergency.

Fig 2.1.1



ROTORUA DISTRICT WARD BOUNDARIES

2.2 Lifelines of Rotorua District

(Refer Rotorua Engineering Lifelines Project – Stage II – June 2003)

This report summarises the data gathered to date on hazards that will affect Rotorua's Engineering Lifelines and assesses the risk of the hazard to those lifelines. The overall outcome of the risk assessment is summarised in Section 3.2 of the report.

2.3 Strategic Direction

The Bay of Plenty CDEM Group Plan outlines strategic objectives for identification and management of readiness, response, recovery and reduction activities identified for the Bay of Plenty. Targets and actions have been developed at Group level, which outline the processes and time frames for achieving those objectives.

Rotorua District Council is committed to providing resources to ensure that these targets and actions are achieved within the Rotorua Operating Area. Work is also underway locally to review and modify existing Standard Operating Procedures (SOP) and Event Plans (EP) to support this Local CDEM Plan.

2.4 Hazard Profile

This Plan identifies the hazards with potential to require a civil defence emergency management response within the Rotorua Operating Area as:

- Flooding
- Volcanic Activity – Eruption
- Earthquake MM8
- Extreme Weather Event
- Hydrothermal
- Agricultural
- Human Disease – Pandemic
- Other Hazards – Hazardous Substances Release, Lifeline Utility Failure

Planning for response to these hazards is based on the consequences of impact rather than the causative agent itself. For example, infrastructure could be seriously affected by a climatic or geological event, but would not suffer during an animal disease outbreak. Conversely, a consequence of a human epidemic could well produce a shortage of healthy technicians able to operate infrastructure systems.

3.0 OPERATIONAL ARRANGEMENTS

3.1 **READINESS** *(Refer to Sect. 64 – CDEM Act 2002)*

Facilities

A Local Emergency Operations Centre (LEOC) located at Rotorua District Council Offices, 1061 Haupapa Street, Rotorua will serve the Rotorua Operating Area. These facilities are designed to meet with C.D.E.M. operational requirements 24 hours a day. Facilities include radio, telephone, operational systems and an independent, stand-by generator and have in place "Call Out Procedures".

In the event of this LEOC being inoperative for any reason, the first alternative venue is Rotorua International Stadium, Devon Street and the second, Mamaku Primary School, 54 Tarena Street. Mamaku. Portable equipment is available for the establishment of such an EOC

For localised events or for movement of specific facilities, Sector Posts have been established at:

Ngongotaha Primary School
Mokoia Intermediate School
Lake Rerewhakaaitu School
Glenholme Primary School
Whangamarino School
Waikite Valley School
Sunset Primary School

Mamaku Primary School
Ngakuru Primary School
Waiariki Institute of Technology
Rotoma Primary School
Kawaha Point Primary School
Reporoa College
New Zealand Maori Arts & Crafts Institute

Sector Post staff training is held at regular intervals.

Operational Procedures

Operational procedures are documented in Standard Operating Procedures (SOPs), maintained by Emergency Management staff. These detail the actions to be taken and processes to be followed for both the LEOC and Sector Posts during the three stages of an event – ‘Standby’, ‘Activation’ and ‘Demobilisation’.

Operational Exercises and Training

The Bay of Plenty CDEM Group Emergency Management Office is responsible for the co-ordination of multi-agency training and exercises as detailed in the Group’s Training Plan. Rotorua District Council will participate to the fullest possible extent in that training and will ensure that personnel nominated for all aspects of Emergency Management duties and functions are trained to the appropriate standards.

Business Continuity Planning

Rotorua District Council maintains Business Continuity Plans for Castlecorp and other Sections / Departments of Rotorua District Council. These set out the arrangements under which the council will meet its statutory responsibility to function to the fullest possible extent, even though this may be at a reduced level, during and after a major emergency.

Community Education

Rotorua District Council is responsible for the implementation of community awareness and education, as required by the Bay of Plenty CDEM Group and described in the Group Plan.

3.2 RESPONSE

Incident and Emergency Levels

Incidents and emergencies are categorised into five levels reflecting the intensity or scope of the events and are detailed in the Group Plan.

The broad headings of the levels of emergency response are:

Fig3.2.1

Level 1	Local incident – declaration not required. Incident dealt with by Emergency Services or other appropriate agency. Controller notified
Level 2	Local incident – declaration not required. Incident dealt with by Emergency Services or other appropriate agency, with external support being required. Controller notified
Level 3	Imminent or state of local emergency being considered. Local significance. LOCAL Controller and C.E.O. to attend
Level 4	Imminent or state of local emergency declared. Of regional significance. REGIONAL Group Controller to attend
Level 5	Imminent or state of national emergency. NATIONAL National Controller to attend

The following table outlines the levels at which a declaration would be likely to be made, and the consequent relationship between controllers at local group and national level:

Fig 3.2.2

Level	Local Controller	Group Controller	Declaration?
1	<ul style="list-style-type: none"> • Maintains a watching brief • Reports to the Local EOC only if activated 	<ul style="list-style-type: none"> • No formal involvement required 	No
2	<ul style="list-style-type: none"> • Ensures Local EOC is partially or fully activated and adequately resourced • Coordinates agreed functions as set by this plan and SOP's • Notifies Group Controller of situation 	<ul style="list-style-type: none"> • Maintains a watching brief • Notifies senior GEOC staff and places them on standby, particularly if situation has the potential to escalate 	No
3	<ul style="list-style-type: none"> • Ensures local EOC is 	<ul style="list-style-type: none"> • Ensures GEOC is 	Local

	<p>fully activated and resourced</p> <ul style="list-style-type: none"> • Considers declaring a local emergency in consultation with the Group Controller and emergency services • Upon declaration, exercises statutory powers under the CDEM Act • Provides regular updates to the Group Controller and seeks CDEM Group support as required 	<p>partially or fully activated (depending on the scale of the emergency)</p> <ul style="list-style-type: none"> • Gives consideration to escalation (i.e. a wider area declaration) in consultation with the Local Controllers & emergency services • Advises adjacent CDEM Groups and National Controller • Deploys a GEOC liaison officer to the Local EOC 	
4	<ul style="list-style-type: none"> • Recommends (in discussion with the Group Controller, other local Controllers and emergency services) extending local emergency scope to wider Group area(s) • Supports and/or assists the Group Controller as required • Continues to coordinate response efforts at the local level • Ensures that the local EOC remains fully activated in support of the GEOC 	<ul style="list-style-type: none"> • Places the GEOC on full activation • Recommend (in discussion with the Local Controllers and emergency services) extending Local emergency to cover wider Group area • Upon wider declaration, exercises statutory powers under the CDEM Act • Provides regular updates to ALL Local Controllers & emergency services • Mediates over issues of use of Group-wide, inter-group or national level provided resources where a conflict arises • Updates the National Controller on a regular basis • Deploys a GEOC liaison officer to the Local EOC 	Group
5	<ul style="list-style-type: none"> • As above, but responds to priorities and overall directions set by the Group Controller 	<ul style="list-style-type: none"> • Responds to priorities set by the National Controller • Coordinates Group response • Provides regular updates to Local Controllers and National Controller 	National

Declarations

- A declaration of local emergency may be made over the Group's area as a whole or in any part of the Group's area, by a person specified in the Bay of Plenty Civil Defence Emergency Management Group Plan.
- The Mayor, or other elected member of that territorial authority, designated to act on behalf of the Mayor if the Mayor is absent, may make a declaration of local emergency over a territorial authority's area.
- A declaration of local emergency may be made over the Rotorua Operating Area as a whole by the persons specified in this Plan.

Persons so authorised are listed at Annex A

A declaration of emergency made by a person authorised to do so within the Rotorua Operating Area must be made in the form specified at Annex B. Extension of a State of Local Emergency form is shown as Annex C and Termination of a State of Local Emergency as Annex D.

Appointment of Local Controllers

Under the provisions of the Bay of Plenty CDEM Group Plan, the territorial local authorities within the Bay of Plenty Region have nominated suitable persons to act as Local Controllers / Alternative Controllers within their respective Operating Areas. The CDEM Group has appointed such persons and directed them to carry out any of the functions and duties of, or delegated to, the Group Controller, and to exercise the powers of a Controller within the Rotorua Operating Area.

- **Those persons appointed as Local Controllers and Alternative Controllers within the Rotorua Operating Area are listed at Annex E.**

Powers of Local Controllers

The Bay of Plenty CDEM Group has delegated to the Local Controller and Alternative Controllers appointed to the Rotorua Operating Area all the powers of a Group Controller, including but not limited to, the powers in Sections 86 to 94 (inclusive) of the Civil Defence Emergency Management Act 2002. These are:

- Evacuation of premises and places
- Entry onto premises
- Closing roads and public places
- Removal of aircraft, vessels and vehicles
- A power to requisition assets and property
- A power to give directions to take or cease certain activities
- A power to carry out inspections
- A power to enter into contracts in urgent cases

During an emergency a Local Controller is required to follow any directions given by the Group Controller.

Civil Defence & Emergency Management Operations Committee

- (a) This Committee comprises of the Emergency Management Co-ordinator and other heads of Departments of the volunteer section. Plus other members as shall be required to attend.
- (b) The Chairperson of the Committee shall be the Emergency Management Co-ordinator.
- (c) The Chairperson shall report to the Rotorua District Council Finance Committee.

Rotorua District Council CDEM Policy Committee

The Finance Committee will consider policy issues pertaining to Civil Defence & Emergency Management and make recommendations to the Council for council approval of all Civil Defence & Emergency Management policy.

Responsibilities

The Finance Committee shall be responsible for recommending to Council implementation of such a policy.

- (a) Civil Defence & Emergency Management policy for the Rotorua District.
- (b) The allocation of adequate finance to enable the implementation of such a policy.
- (c) The appointment of a suitable person to be the local Controller, and suitable persons to be Alternative local Controllers.

The administrative address of the Rotorua District Council on all CDEM matters shall be:

EMERGENCY MANAGEMENT CO-ORDINATOR
ROTORUA DISTRICT COUNCIL
PRIVATE BAG 3029
ROTORUA

Civil Defence & Emergency Management Executive Committee

This Committee comprises:

- A) the Mayor
- B) The Local Controller of Civil Defence & Emergency Management
- C) The Chief Executive
- D) The Alternate Controllers
- E) The District Emergency Management Co-ordinator

Chair

Unless decided otherwise by the Executive Committee, the Chair of the District Council shall be the Chair of the Executive Committee.

Emergency Committee Meeting

Any Committee member can request an emergency committee meeting as the need arises.

Liaison with Adjacent Territorial Authorities

The Bay of Plenty CDEM Group will co-ordinate inter-council co-operation and support during an event that has regional or national significance. MOU have been established with Hawkes Bay, Gisborne and Waikato CDEM Groups.

In the event of an emergency arising in the surrounding Operating Areas within the Bay of Plenty Emergency Management Group, pre-arranged and ad-hoc assistance will be provided by the Rotorua Operating Area to the affected council(s), on the following conditions:

- The provision of any such assistance does not degrade the response capability of the Rotorua Operating Area.
- Reimbursement may be sought for the use of resources so provided.

Assistance to adjacent Emergency Management Groups will be provided under the same conditions.

Liaison with Emergency Services and other organisations

The Rotorua District Council has effective inter-Emergency Services liaison and combined radio communications. It will have Memorandums of Understanding with other Local Authorities adjacent to Rotorua District, outside of the Bay Of Plenty CDEM Group area, together with a combined operational structure within the Group area.

Emergency Services Co-ordinating Committee

- (a) An Emergency Service Co-ordinating Committee has been formed in Rotorua to co-ordinate activities of the services up to and including emergency response Level 2.
- (b) The role of the Committee is to pre-plan at senior level, set up established procedures for control, organisations and communications to ensure the co-ordinated deployment of resources during an emergency.
- (c) The Committee is under the chairmanship of the Police and has representatives from:
 - Fire Service
 - Ambulance Service
 - Civil Defence & Emergency Management
 - Lakes District Health Board
 - and any other person as required.

4.0 EXERCISE OF POWER

4.1 Control Group

As per Section 85 of the Act – Emergency Powers of Civil Defence Emergency Management Groups

4.2 Local Controller

As per Sections 86 – 92 of the Act (Specified on page 13 of this document – Powers of Local Controllers)

5.0 LOCAL EMERGENCY OPERATIONS CENTRE (EOC) STRUCTURE

5.1 Introduction

The Bay of Plenty CDEM Group Plan details the locations and operational functions of Emergency Operations Centres within the Group's area, and should be read in conjunction with this plan.

5.2 Local EOC Function

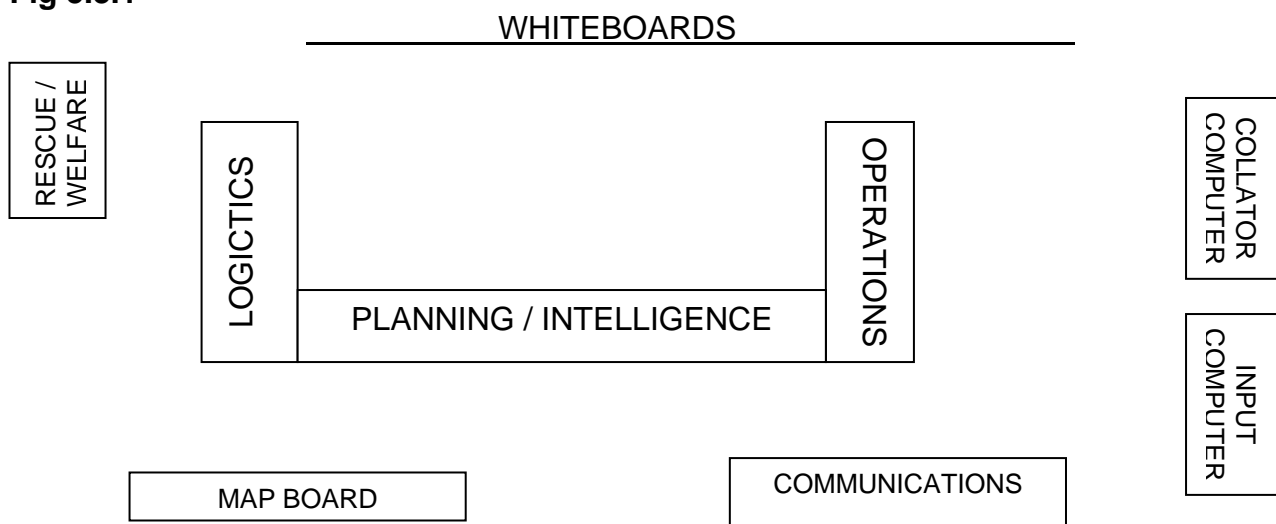
Emergency Services or other lead agency Incident Controllers will manage and control the on-scene response to any incident. The LEOC and Civil Defence Controller are primarily concerned with high level planning and intelligence and the systematic acquisition and prioritisation of resources in response to the requirements of the emergency.

In both declared emergencies and non-declared incidents the LEOC acts to support the Incident Controller(s) who have control at the specific incident(s) scenes. It is important to note that while the LEOC has no operational function, it will set high-level priorities and direction for the Incident Controllers. It is also important to note that in a declared emergency, overall management becomes the responsibility of the Local Controller. All services and agencies are required to work to tasks and priorities set by the Local Controller.

5.3 Local EOC Structure

The LEOC is based on the Co-ordinated Incident Management System (CIMS) structure, comprising Control, Operations, Planning & Intelligence and Logistics.

Fig 5.3.1



The Control Group will be situated within the Council Chambers, with Environmental Services Emergency Group and Engineering Emergency Group situated in Committee Rooms 1 and 2 as necessary.

5.4 Local EOC Human Resources

The EOC is resourced with fully trained and competent individuals in each of the key CIMS functions. These appointments may be made from Council staff, volunteers, emergency services, contracted personnel and other agencies.

5.5 Local EOC Physical Resources

The Local EOC is equipped to meet CDEM operational requirements, including radio communications (*national HF-SSB, Group VHF, local VHF & amateur bands*) information display systems, telephones, IT and GIS systems. Permanent stand-by generator power is available.

In the event of necessary re-location, a 'mobile' equipment box is available containing all the basic equipment and stationery supplies needed.

5.6 Local EOC Activation

The Local EOC will be activated, in accordance with the Initialisation List on display in the EOC and the emergency activation guidelines that are outlined in the Group Plan at table Fig 3.0.2

For operational flexibility, the Local EOC may be sized according to the anticipated needs of the situation, and the appointed Local Controller is responsible for determining the level of staffing required to manage the response. The structure is intended to provide a capability to expand and contract with the magnitude of the emergency situation and the resources committed to it.

6.0 TRANSITION TO LEVEL 3 / 4 EVENTS

6.1 Bay of Plenty CDEM Group Transition Procedures

Action for Levels 1 & 2 events are at LEOC level of operations. Should a Level 3 event become regionally significant the group Controller may exercise his powers under the Act to assume overall control of the emergency. Before the group Controller assumes control, the following procedure will be executed. All steps in this process are mandatory.

- The Group Controller makes a decision to escalate to a Level 4 event and formally advises the Rotorua Operating Area Local Controller of the intention to assume Group control at a specified time.
- The Group Controller makes a decision as to whether the existing declaration of a state of local emergency needs to be terminated and a new declaration for a wider or different area made. If a new declaration is to be made, the Group Controller obtains the consent of a person authorised to declare a state of local emergency. The Group Controller formally advises the Rotorua Operating Area Local Controller of his/her intentions.
- The Rotorua Operating Area Local Controller prepares a Situation Report effective at the time specified for the transfer of control. The Situation Report includes the advice of the intention to escalate to a Level 4 event.

- If a new declaration is to be made, the Rotorua Operating Area Local Controller prepares the correct documentation to terminate the state of local emergency to coincide with the time the Group Controller makes a new declaration, and has it signed by a person authorised to do so.
- Shortly before the designated time the escalation is to take effect, the Rotorua Operating Area Local Controller provides a comprehensive briefing to the Group Controller, with particular focus on:
 - Established priorities
 - Current activities and progress
 - Preparations already made for new initiatives
 - Areas of concern such as gaps in intelligence, shortages of logistic supplies.
- When the Group Controller is satisfied, he formally advises the Rotorua Operating Area Local Controller that he is ready to assume control of the event.
- At the designated time:
 - The prepared Situation Report is released
 - If required, the existing declaration is terminated and the new one promulgated
 - The Group Controller assumes control
 - The Rotorua Operating Area Local Controller supports the Group Controller and acts under his or her directions
 - The Rotorua Operating Area Local EOC continues to manage local aspects of the emergency until such time as it is stood down by the Group Controller

7.0 RECOVERY

7.1 Introduction

The Bay of Plenty CDEM Group Recovery Plan outlines the recovery arrangements for the Bay of Plenty region.

The Rotorua Emergency Management Office will develop recovery plans and SOPs for the Rotorua Operating Area, which will align with the statements below. A Recovery / Welfare Manager will also be appointed.

7.2 Function

The purpose of Recovery is to assist the community to return to normal social and economic activities as soon as possible, and at the same time to ensure, as far as Possible, the mitigation of any further emergency.

7.3 Priorities for Recovery Assistance

Recovery priorities are:

- Health & Safety of individuals and the community
- Physical recovery
- Social recovery
- Economic recovery
- Assess disaster impacts and prioritise activity
- Co-ordinate welfare delivery
- Manage public information release wisely

7.4 Expenditure Management

The Rotorua Operating Area Recovery Plans will prescribe the accounting procedures to be used during the emergency, whether it is declared or not. The management and recording of expenditure is vital to support future claims for Government subsidies and assistance.

7.5 Finance Relief Fund

The Recovery Plans will provide for the Recovery Managers to establish and administer a Finance relief Fund should it become apparent that there might be individuals suffering financial hardship due to their homes and/or contents being uninsured or under-insured.

8.0 ADMINISTRATIVE ARRANGEMENTS

8.1 Rotorua District Council CDEM activities

The Rotorua Emergency Management Office will be responsible for co-ordinating all operational aspects of Reduction, Readiness, Response, and Recovery and ensuring that this Plan can be implemented and meet requirements of the CDEM Act 2002.

8.2 Bay of Plenty CDEM Group Representation

The Bay of Plenty CDEM Group is established pursuant to Section 12 of the Act, and their respective Mayors represent councils on the Group. New appointments will be made following each triennial election.

8.3 Bay of Plenty CEG Representation

The Bay of Plenty Co-ordinating Executive group (CEG) was established pursuant to Section 20 of the Act. Peter Guerin (CEO) represents Rotorua District Council.

8.4 Financial Arrangements

The initial and primary duty for responding to and dealing with the consequences of emergencies rests with the local authorities. They are also responsible for all initial funding of Civil Defence Emergency expenditure.

In the event that the Bay of Plenty CDEM Group is activated in support of the local authorities, the Group will be responsible for all expenses incurred by the group.

Lead agencies and supporting agencies that have emergency management response functions are responsible for all expenses incurred in the course of those functions.

The partner councils are contributing members to the financial arrangements of the Bay of Plenty CDEM Group and have agreed to contribute funding as outlined in the Administrative Section of the Group Plan.

8.5 Insurance Cover

Vehicles and equipment operated in day-to-day business, or held for emergency requirements, are covered under the administering authority's comprehensive insurance arrangements, which also provide a public liability cover.

9.0 STANDARD OPERATING PROCEDURES AND SUPPORTING PLANS

9.1 SOPs currently being reviewed and modified are:

- SOP 1 Local EOC structure, staffing, activation & operations
- SOP 2 Warnings
- SOP 3 Public Information & Media Management
- SOP 4 Welfare
- SOP 5 Recovery
- SOP 6 Public Awareness & Education
- SOP 7 Financial
- SOP 8 Transitional – Levels 2-3 / Levels 3-4
- SOP 9 U.S.A.R. Operations
- SOP 10 Communications

9.2 Operational Plans currently being reviewed and modified are:

- EP 1 Recovery
- EP 2 Welfare
- EP 3 Warnings
- EP 4 Public Information
- EP 5 Logistics
- EP 6 Communications
- EP 7 Energy
- EP 8 Engineering

**PERSONS AUTHORISED TO DECLARE
A LOCAL CIVIL DEFENCE EMERGENCY**

	Name	Contact Details	
MAYOR	Kevin Winters	Home Phone:	07 345 4776
		Home Fax:	07 345 4776
		Mobile Phone:	0252 760 259
		E mail:	kevin.winters@rdc.govt.nz

In accordance with Section 25 (5) of the Civil Defence Emergency Management Act 2002.

DEPUTY MAYOR	Trevor Maxwell	Home Phone:	07 348 7892
		Home Fax:	07 348 0910
		Mobile Phone:	0272 449 842
		E mail:	trevor.maxwell@rdc.govt.nz

In accordance with Sections 25 (2) & (5) of the Civil Defence Emergency Management Act 2002

COUNCILLOR	Glenys Searancke	Home Phone:	07 348 4243
		Home Fax:	07 348 4718
		Mobile Phone:	0272 757 905
		E mail:	g.g.searancke@clear.net.nz

In accordance with Section 25 (2) of the Civil Defence Emergency Management Act 2002.

Declaration of a State of Local Emergency Form

Declaration of a State of Local Emergency for the Bay of Plenty Civil Defence Emergency Management Group

Pursuant to Section 68 of the Civil Defence Emergency Management Act 2002, I

_____ (full name)

Declare that a state of local emergency exists in

_____ (the area or districts)

This state of local emergency comes into force at the time and on the date of this declaration,

or

comes into force at _____(time) on _____(specify late date)

This state of local emergency expires on

_____ (time) on _____ (date)

or

with the commencement of the seventh day after the date on which this declaration was declared, whichever is the earliest.

Declared by: _____

Designation: _____

Time and date of declaration: _____

Extension of a State of Local Emergency Form

Declaration Extending a State of Local Emergency for the Bay of Plenty Civil Defence Emergency Management Group

Pursuant to Section 71 of the Civil Defence Emergency Management Act 2002, I

_____ (full name)

extend the state of local emergency declared in respect of

_____ (the areas or districts over which the state of emergency exists)

that was declared at _____(time) on _____ (date)

until _____(time) on _____(date)

(must not be later than the commencement of the seventh day after the date of this declaration)

Declared by: _____

Designation: _____

Time and date of declaration: _____

Termination of a State of Local Emergency Form

Declaration Terminating a State of Local Emergency for the Bay of Plenty Civil Defence Emergency Management Group

Pursuant to Section 72 of the Civil Defence Emergency Management Act 2002, I

_____ (full name)

terminate the state of local emergency declared in respect of

_____ (the areas or districts over which the state of emergency existed)

that was declared at _____(time) on _____(date)

The termination of the state of local emergency takes effect

from _____(time) on _____(date)

Declared by: _____

Designation: _____

Time and date of declaration: _____

**PERSONS AUTHORISED AS LOCAL CONTROLLERS
FOR ROTORUA DISTRICT COUNCIL**

Glenys Searancke Mailing address: 26 Wharepaina Crescent, Rotorua
Home Phone: 07 348 4243
Mobile Phone: 0272 757 905
Fax : 07 348 4718
E-mail: g.g.searancke@clear.net.nz

Trevor Maxwell Mailing address: 2 Arataua Street, Rotorua
Home Phone: 07 048 7892
Mobile Phone: 0272 449 842
Fax: 07 348 0910
E-mail: trevor.maxwell@rdc.govt.nz

Malcolm Breadmore Mailing address: 71 Hall Road, Rotorua
Home Phone: 07 357 4147
Mobile Phone: 0274 982 335
Fax: 07 357 4969
E-mail: ems.ltd@xtra.co.nz